

Speeder STJU834

Composition

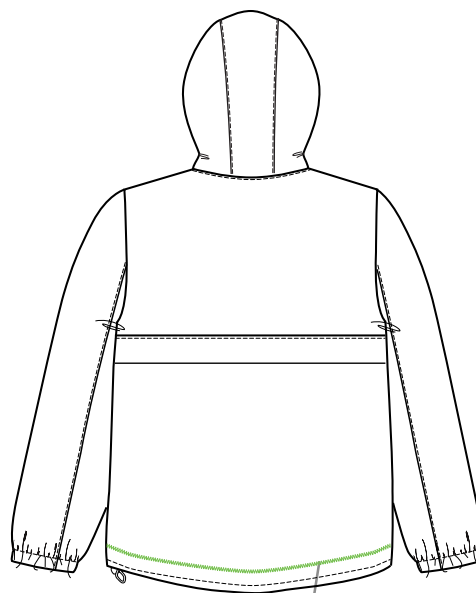
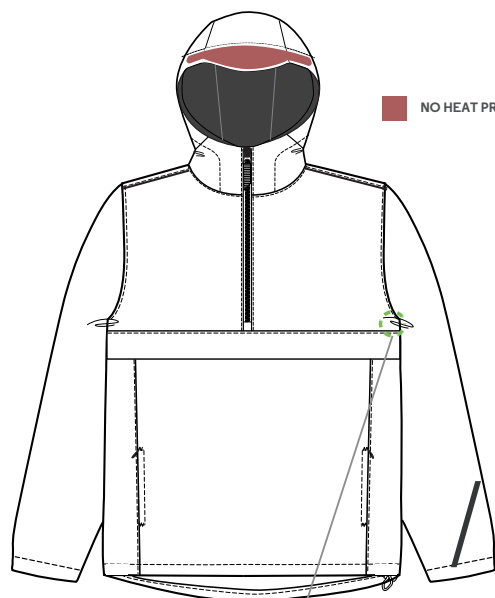
Shell - 100% recycled polyester

Fluorine-free durable water repellence

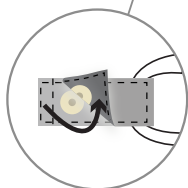
Lining - 100% recycled polyester

Printing guide

Screen print	● ○ ○	Waterbase / Plastisol Need special inks for low curing temperature. polyester can cause a colour migration: Blocking layer is highly recommended.
Discharge	○ ○ ○	Not applicable
Transfer -DTF, Flock, Flex, Screen Transfer, ...	● ● ●	Use type of glue adequate for max 130°C. Steam after press to limit shyny marks.
Direct To Garment	○ ○ ○	Not applicable
Embroidery	● ● ●	Direct embroidery, stitched patch, loop labels...
Sublimation	○ ○ ○	Not applicable



Inner Strip
with opening snap button
for easy chest access
LEFT SIDE DECORATION



Large Inner Zip
for easy decoration access



→ [More information on our website](#)

STANLEY/STELLA